





VENTANAR is a Colombian company with global projection. Serving the aluminum curtain wall and window market since its origins in 1.980 to present, it has established itself as one of the leading companies for the engineering and manufacturing of architectural facades, participating in major projects nationwide.

Ventanar offers from conceptual design to the development of detailed engineering, manufacturing and assembly of mainly glazed facades and other complementary products for the building envelope as ceramic, aluminum composite panel and phenolic panel, succeeding in giving architects the freedom to design projects without limits, similar to those seen in big cities around the world, while achieving the bioclimatic, acoustic and aesthetic requirements that the project design team may need. Furthermore, VENTANAR offers a technical proposal for a system and product that comply with the requirements and norms, while maintaining or improving the performance of the requested product, thus offering value engineering.

From its production plant located in Giron Santander, VENTANAR is strategically located reaching national coverage and competitive times and post sales service, added to the quality of a 100% colombian product.

VENTANAR includes in its portolio 100% factory assembled UNITIZED facade systems, allowing better finishes and extra-fast supply, with a productive capacity of up to 300m²/day. These modular prefabricated systems correspond to the fifth generation of facades developed worldwide.

VENTANAR has developed its exclusive windows and doors line for housing and hospitality markets, with high performance sealing and tightness for water and air respectively, achieving the perfect balance between performance and aesthetic quality in their products, offering as well special sound attenuation products for hotels, rated up to STC51.

Due to the high production demand, VENTANAR initiated its internal expansion prcoess, with the construction of two new production warehouses for the manufacturing of curtain walls, as well as coating and logistics management of its aluminum extrusions, including an automatic powder coating line that uses non-polluting and latest technolgy machinery in order to process its curtain walls, increasing its installed capacity significantly and allowing the company to set up as a major brand in the sector worldwide.

Andrés Novoa Pineda
Presidente

PRODUCT LINES

CORPORATE LINE

Svelte 50 curtain wall (stick system)
Modular prefabricated curtain walls
(Unitized system)
Ventilated (alucobond, porcelain,
phenolic panel)
Structural glass curtain walls (fin glass)
Automatic doors (DITEC)
Fixed and operable sun shades
Structural balustrades
Bullet proof windows



RESIDENTIAL LINE

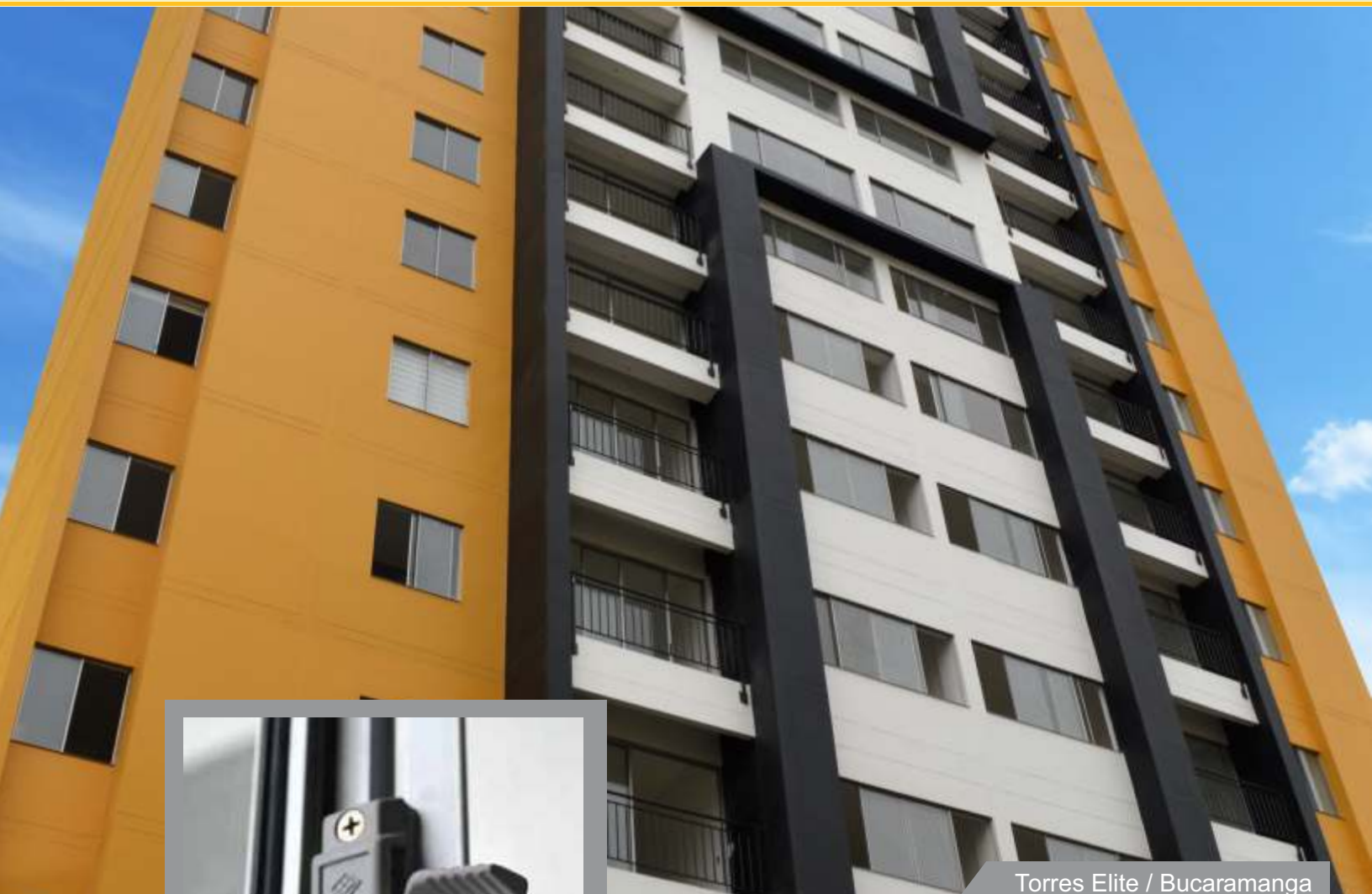
High end European systems for windows
and doors
Shower glass enclosures
Economic window systems
PVC window systems
Handrails and balcony glass enclosures
Manual and motorized retractable insect
screens.





This economic window system includes 14 mm x 32 mm aluminum profiles, 38 mm large sill with an isobaric chamber for water control, 90° cut profiles, and excellent EPDM or silicone seals against water and wind penetration.

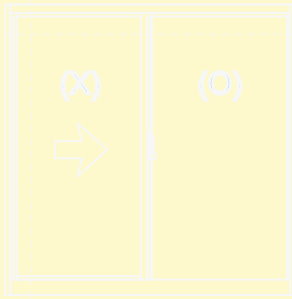
PRACTIKA



Torres Elite / Bucaramanga



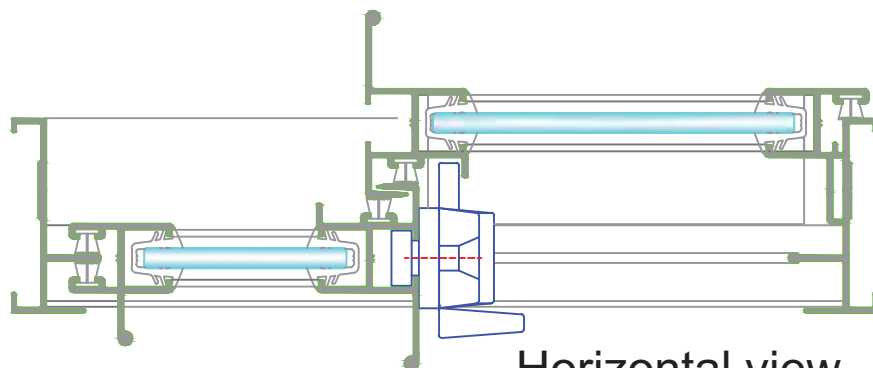
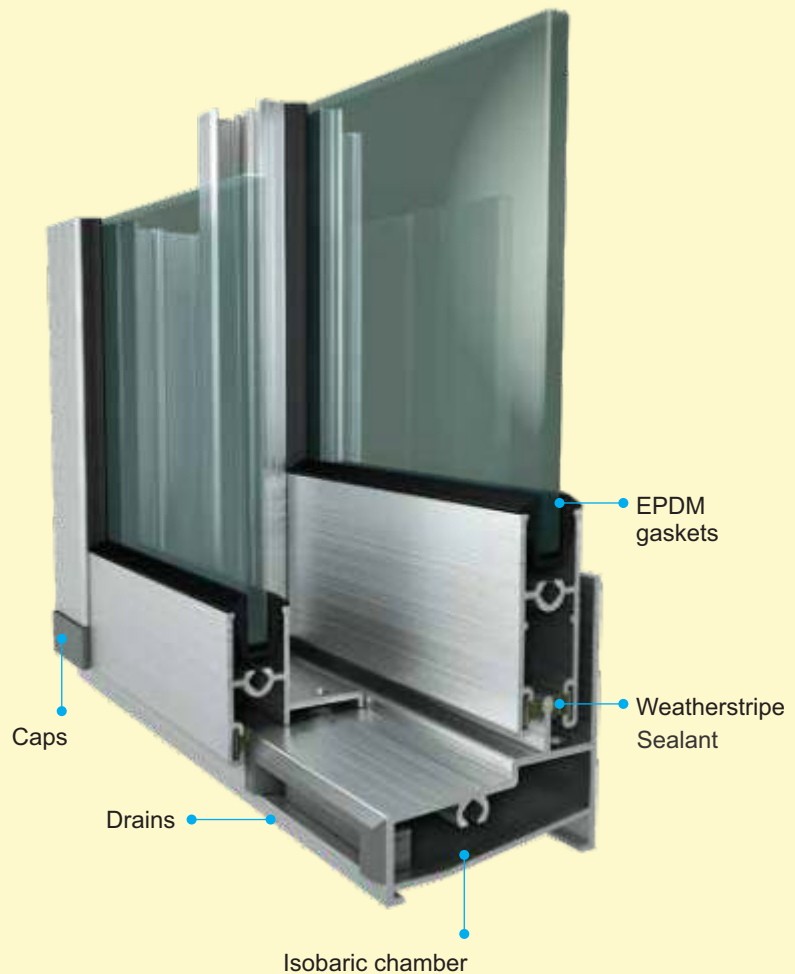
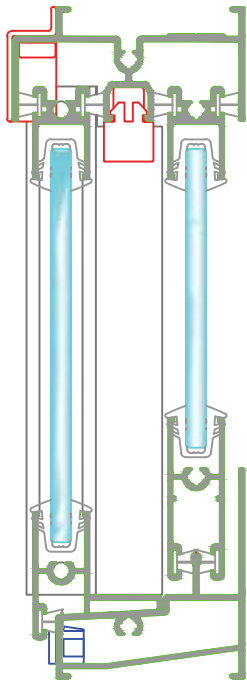
The system meets NSR10 requirements and CE European standards, allows 3 mm to 4 mm glasses, and up to 10 kg per panel.



Economic system for sliding window

- Double-railed frame
- Reinforced coupling mechanism
- Glass thickness: 3 or 4 mm
- Frame and sash cutting angle: 90°
- Nylon rollers (maximum panel weight: 10 kg)
- Large sill specially designed for water penetration control

Vertical view



Horizontal view